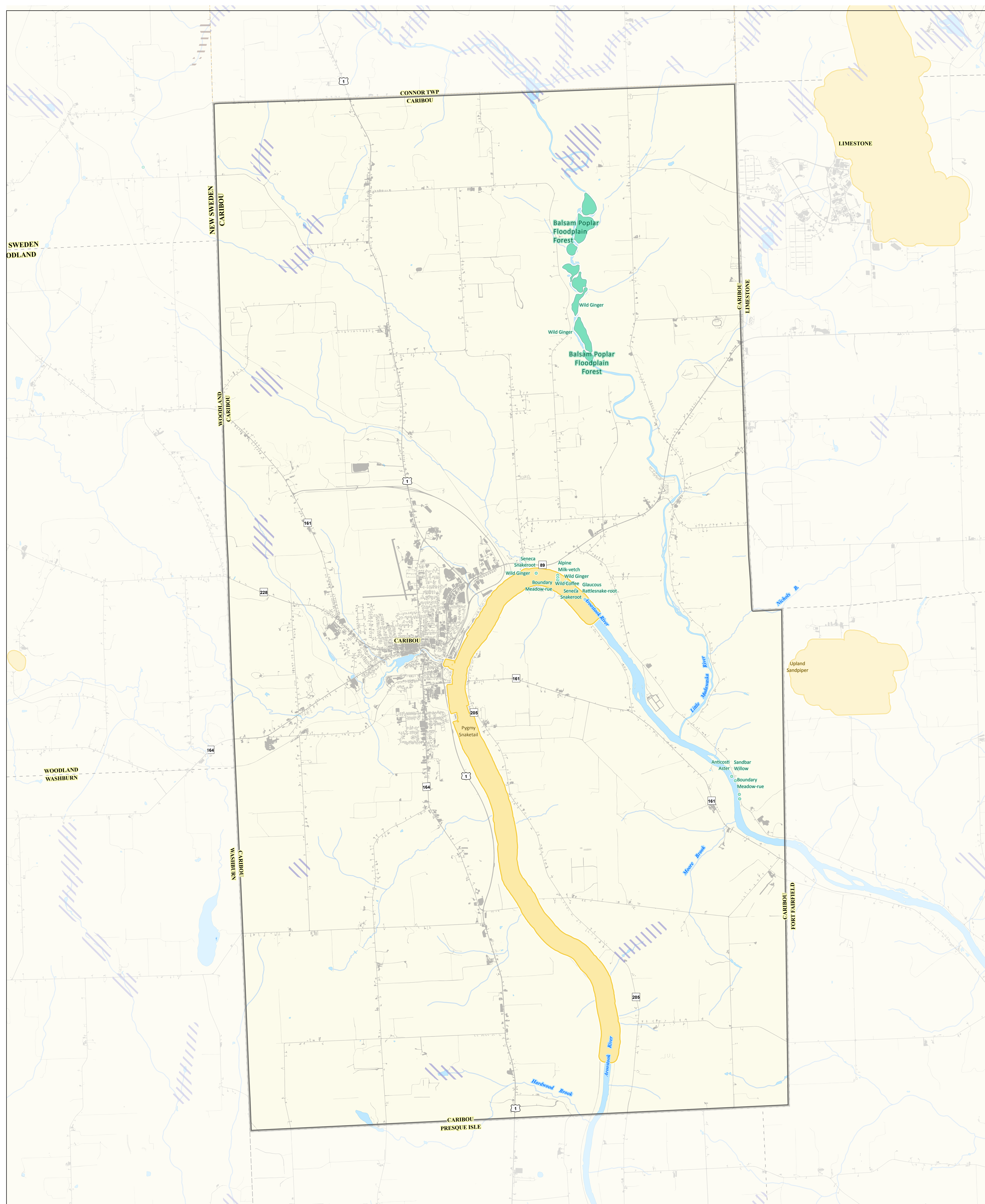
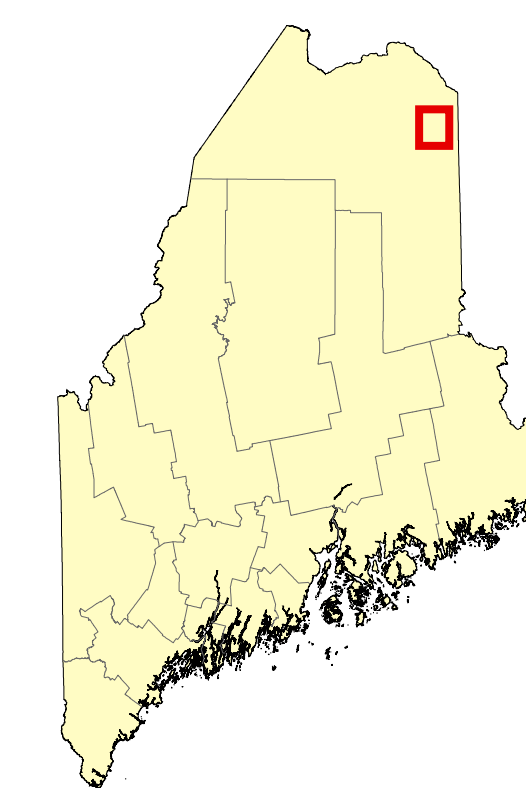




www.beginningwithhabitat.org

High Value Plant & Animal Habitats Caribou

This map is nonregulatory and is intended for planning purposes only




☐ Town of Interest

Organized Towns

 **Unorganized
Towns**


 Developed Impervious surfaces such as roads and buildings.

Rare or Endangered Wildlife*

 Endangered, Threatened, or Special Concern Species

Mapped observations of rare wildlife species.


Rare or Exemplary Plants and Natural Communities

 **Rare Plant Locations** Known rare, threatened, or endangered plant occurrences are based on field observations.

 Rare and Exemplary Natural Communities

Significant Wildlife Habitat

Deer Wintering Area Forested area possibly used by deer for shelter during periods of deep snow and cold temperatures.

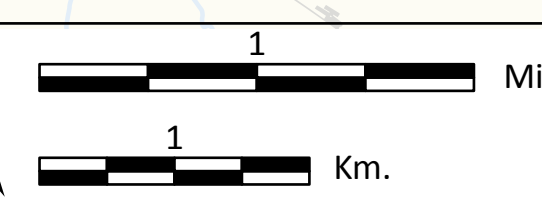
 Inland Waterfowl and Wading Bird Habitats	Breeding, migrating/staging, or wintering areas for inland waterfowl or breeding, feeding, loafing, migrating, or roosting areas for wading birds.
--	--

*Species and habitat labels are provided within and proximate to the town of interest.

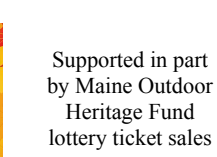
Contact the **Environmental Review** Team at the Maine Department of Inland Fisheries and Wildlife for information on fisheries, wildlife, and critical habitat resources related to potential development activities and regulatory processes. IFWEnvironmentalreview@maine.gov

TOWN BOUNDARIES - ME Office of GIS (2021)
HYDROLOGY - U.S. Geological Survey National
Hydrography Dataset(2016)
DEVELOPED - NOAA Coastal Change Analysis
Program (C-CAP) (2022)

RARE, ESSENTIAL & SIGNIFICANT WILDLIFE
HABITATS - ME Office of GIS, ME Dep. of Inland
Fisheries & Wildlife (2024)
RARE NATURAL COMMUNITIES & PLANTS - ME
Natural Areas Pgm (2024)



Scale: 1:28,000
Projection: UTM 19N
Datum: NAD 1983



Map Prepared by Maine
Department of Inland
Fisheries & Wildlife
April 2025

